

Berkshire

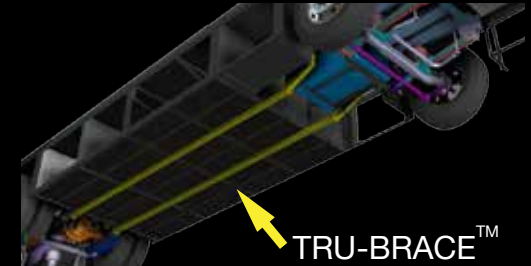


TRU-BRACE

Forest River Diesel Chassis Upfit Support System



Your home
on wheels needs
a solid foundation,
that is why your Forest
River Diesel Chassis
is upfit by MORryde.



Structure built on a fixture table for optimum leveling and squareness. Laser cutting +/- 0.010. Bending within +/- 0.01 degree.

ORIGINAL CHASSIS

UPFIT WITH THE TRU-BRACE™ REINFORCED FRAME



Aluminized Steel Side Skirts **prevent rust** and **prolong the life** of the structure

Side skirts assembled as one piece to **minimize seams** and **prevent rust creep**

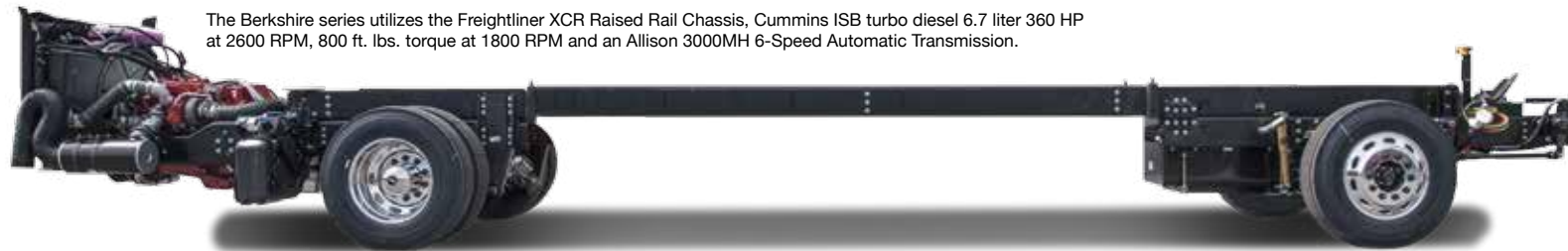
Upgraded from molded plastic, the steel bays hold **more weight** for your gear

The Tru-Brace™ reinforcements **strengthen the frame**, **reduce chassis flex** and **minimize the springboard effect** that whips the back of your unit up and down over rough roads.

DRIVE THE DIFFERENCE.

You expect more, we deliver more.

At Berkshire we know your standards are high, and we strive not to meet but to exceed your expectations. From the ground up, the Berkshire series is designed to bring you complete comfort on the road. In our effort to bring you unparalleled excellence, we proudly utilize only the finest components and building processes in the industry as a sign of our dedication to your satisfaction.



The Berkshire series utilizes the Freightliner XCR Raised Rail Chassis, Cummins ISB turbo diesel 6.7 liter 360 HP at 2600 RPM, 800 ft. lbs. torque at 1800 RPM and an Allison 3000MH 6-Speed Automatic Transmission.



Introducing the V-Ride™ Rear RV Suspension System from FCCC. As the first ever single axle suspension rated at 21,000 pounds and higher, it's designed for today's demanding luxury motorhome owners- who want the ability to carry more gear, the freedom to equip their interiors with premium amenities, and a comfortable, confident driving experience.*

CONSTRUCTION BENEFITS



BERKSHIRE CONSTRUCTION BENEFITS:

1. For quality assurance, all construction takes place in a single facility.
2. Auxiliary air chuck on 1.5" insulated firewall.
3. Neoprene isolator between chassis and floor eliminates vibration.
4. Truma continuous hot water heater.
5. Easy interior dash access.
6. Auxiliary LP hook-up on curb side.
7. Minimal connections on all water lines.
8. Our fiberglass dash is integrated with the front cap.
9. All firewall openings sealed and grommets to eliminate electrical shorts

EXTERIOR FEATURES



EXTERIOR FEATURES:

1. All Berkshires feature an exterior entertainment center with a 32" LED HDTV with radio and auxiliary jack.
2. The Berkshire's standard slide out 8.0kW generator.
3. Easily access chassis electrical fuses with our exclusive no fuss schematic.
4. Berkshire's water manifold system with whole unit water filter and exterior shower.
5. Standard strut assisted café compartment doors with pass thru storage and optional slide-out storage tray.
6. Equalizer Systems hydraulic extend and retract landing gear. Automatic, one touch operation levels your motorhome in less than two minutes, operating each leg independently in a sequential process.

Berkshire



Berkshire





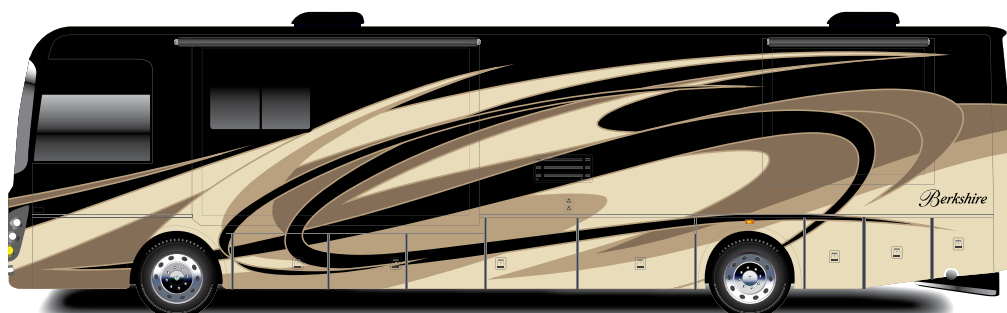
Berkshire



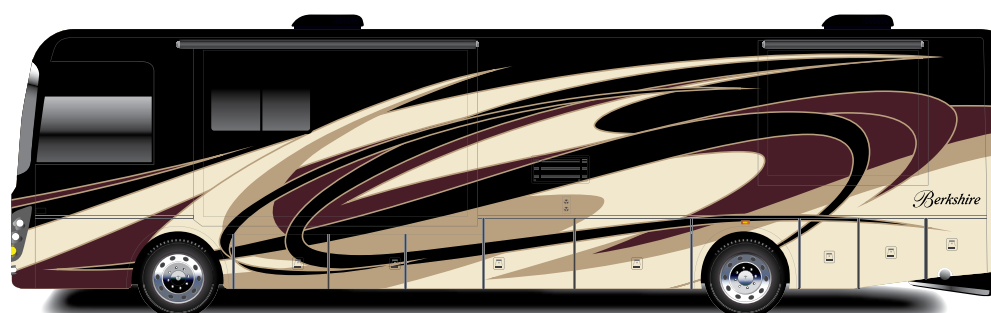
NEW MOON EXTERIOR OPTION

Berkshire

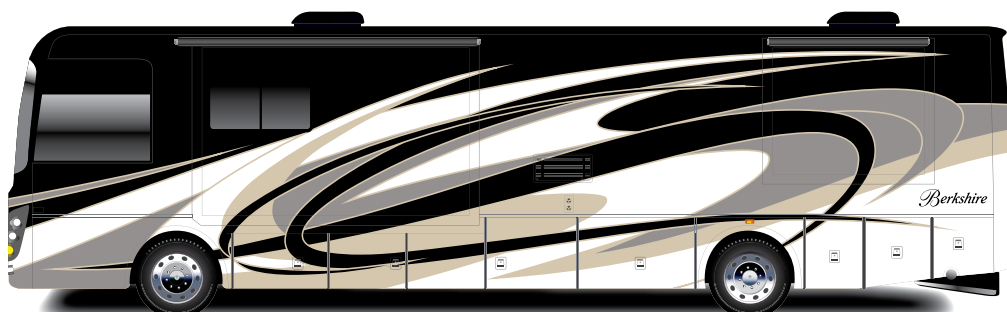
PAINT PACKAGES | DECOR OPTIONS



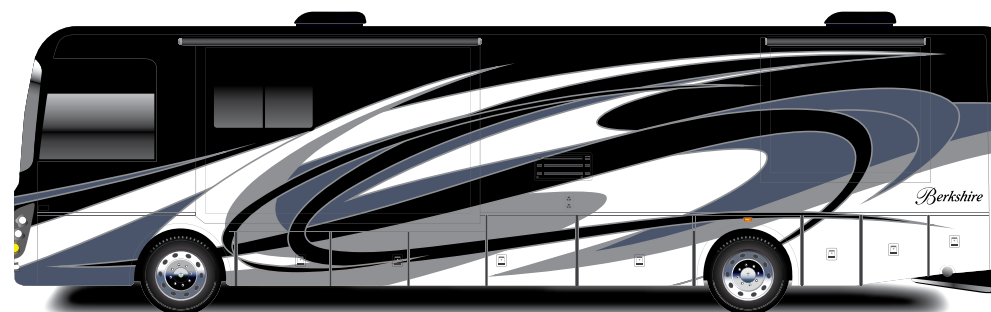
DUNE



PAINTED ROCK



NEW MOON



ISLAND

WOOD GRAIN OPTIONS



NATIVE
CHERRY

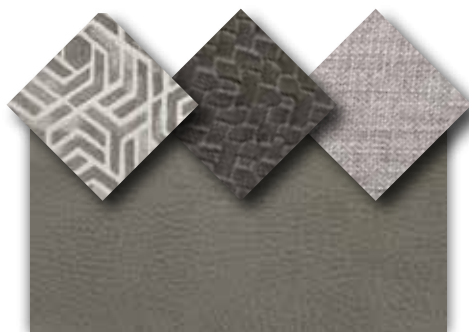


SIERRA MAPLE

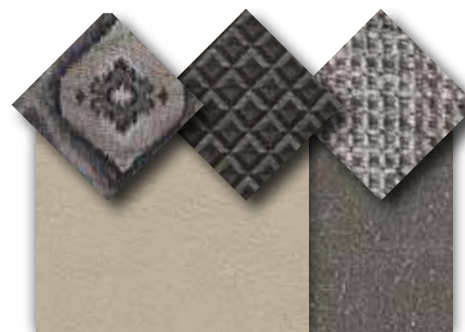


CARAMEL CHERRY

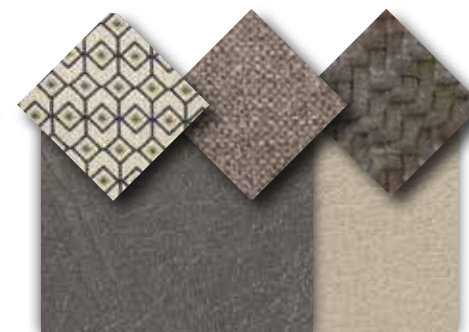
DECOR OPTIONS



MILAN

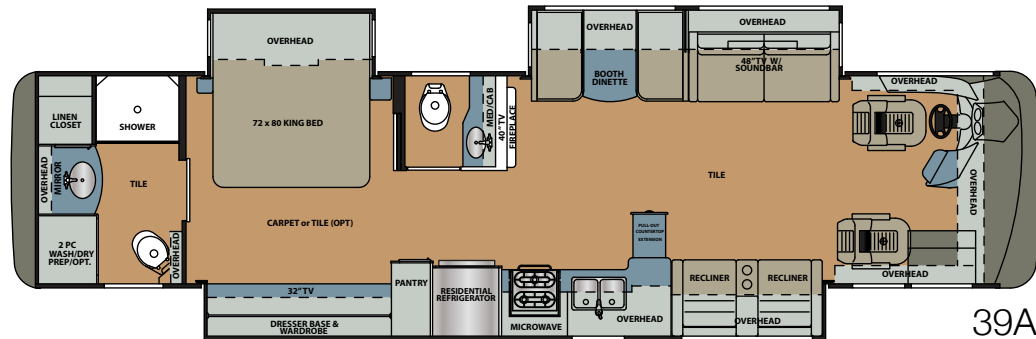
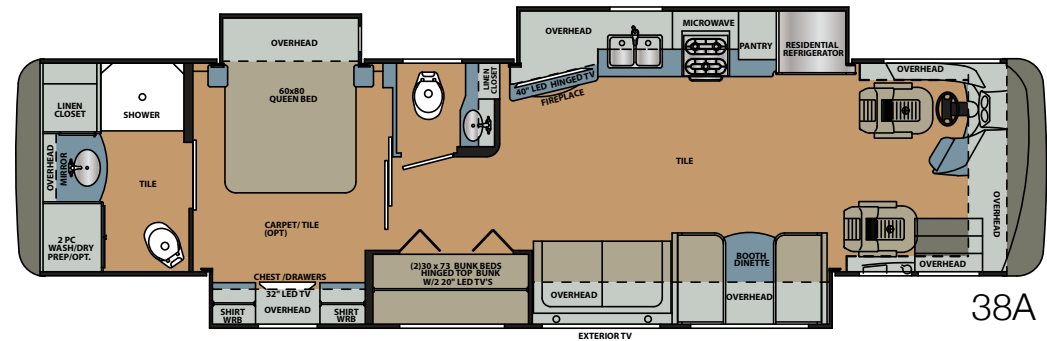
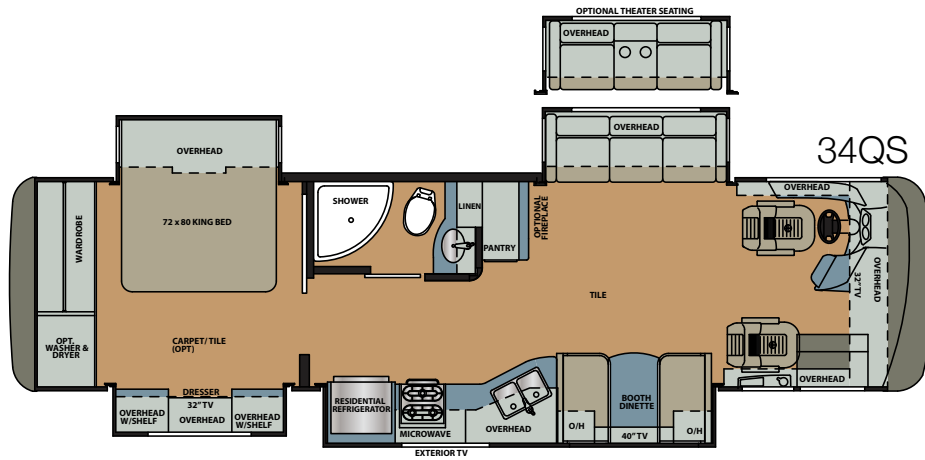


ASPEN



SAHARA

FLOORPLANS | SPECIFICATIONS



Floorplan	Length (Feet)	GVWR (Lbs.)	GCWR (Lbs.)	GAWR Front (Lbs.)	GAWR Rear (Lbs.)	Wheelbase (Inches)	Height* (Feet)	Width* (Inches)	Basement storage* (Cu. Ft.)	Awning (Feet)	Fresh Tank (Gal.)	Gray Tank (Gal.)	Black Tank (Gal.)	LP Tank	Furnace (BTU's)	Hot Water
34QS	35' 7"	32,350	42,350	12,350	20,000	206"	12' 7"	100"	130'	14' 7"	103	66	42	24.5	35,000	Continuous
38A	39' 5"	33,350	43,350	12,350	21,000	252"	12' 7"	100"	183'	18' 0"	103	66	42	24.5	42,000	Continuous
39A	39' 6"	33,350	43,350	12,350	21,000	252"	12' 7"	100"	183'	18' 0"	103	66	42	24.5	42,000	Continuous

Please see back cover for more information regarding weights.

Automotive & Cockpit Standards

- Freightliner XCR raised rail chassis
- Cummins ISB turbo diesel 6.7 liter 360 HP at 2600 RPM, 800 ft. lbs. torque at 1800 RPM
- Allison 3000MH 6-Speed automatic transmission
- 120v engine heater 750W
- 22.5" polished aluminum wheels
- Michelin X line energy Z 275/80R22.5 tires
- 10,000 Lb. tow capacity
- Allison electronic push button shifter
- 100 gallon, locking dual fill fuel tank
- Driver side mounted 13 gallon DEF tank
- LCD engine message center
- Day time running lights
- 7-Pin tow power connector
- 18.7 CFM air compressor
- Farr Eco-air cleaner
- Air filter restriction indicator
- Fuel/water separator
- Brake line air dryer with heater
- Automatic, heated moisture ejectors
- Power steering
- Washer/heavy duty-wiper with intermittent function
- 160 amp alternator
- Two (2) 1900 CCA at 0 degree Fahrenheit, maintenance free batteries
- Full air ABS brakes with auto slack adjuster, front disc brakes
- Variable exhaust brake
- Telescopic/tilt steering wheel
- Suspension Neway front and V- Ride rear
- Sachs custom tuned shock absorbers
- 55 degree wheel cut
- Auto air suspension deflation system
- Cross flow, rear mounted radiator
- Transmission oil cooler
- 5 year / 100,000 mile coolant (some maintenance required)
- 4-Spoke VIP black steering wheel
- Electronic cruise control with high idle
- Multiple auxiliary charging ports at dash
- Power stepwell cover
- Entry assist handle

Construction & Exterior Standards

- Fiberglass front and rear caps
- Sikkens® full body painted exterior (4x clear coat)
- Four (4) point fully auto hydraulic leveling system with auto air dump
- Steel basement structure
- Tru-Brace chassis support system
- Rust resistant aluminized steel chassis skirts
- Diamond shield front mask protective film
- 1 Piece Fiberglass Roof
- Top-mount remote exterior/heated/mirrors/with cameras
- Frameless dual pane, dark tint windows
- Automotive foam and Ziebart seal undercoating
- Carefree power door awning
- Carefree Latitude dual pitch patio awning with LED lighting and wind sensor
- Carefree slide out topper with covers
- Full height strut assisted compartment doors with full pass through storage
- "One Key" system, exterior compartment, entry door and fuel fill doors
- Quiet integrated A/C intake/ducting roof system
- Crowned and layered vacuum bonded fiberglass roof
- Vacuum bonded 3" floor with tubular aluminum frame
- Gel coat vacuum bonded sidewalls, slideout floors and walls
- 1/2" Structure wood flooring
- Block foam polystyrene insulation walls/roofs/floors
- 30" Entryway
- In wall channeled drains for A/Cs
- Tubular steel firewall with polystyrene insulation
- Lighted exterior assist handle
- Two piece rear ladder
- 84" interior ceiling height
- PTL steel entrance door with deadbolt
- Auxiliary air chuck (front drivers side compartment)
- Auxiliary LP supply, quick connect (passenger side)
- LED marker lights
- Full length mud flap with chrome Forest River name

Electrical Standards

- 50A service w/auto transfer switch and 30' power cord
- 8kW Onan diesel generator with manual slide tray
- Energy management system
- Electronic battery disconnect switch
- Remote generator start switch (on dash/bedroom)
- Multi-Plex Lighting with smart APP Controls
- Dimmer control lighting throughout
- LED ceiling light package
- Driver and passenger LED ceiling map lights
- Cosmetic bathroom lighting
- Decorative wall and dinette lighting where applicable
- Auxiliary engine start switch at dash
- Individual reading lights at bed overhead
- 2000w pure sine wave inverter/charger
- Auto generator start control
- Four (4) Six volt deep cycle house batteries
- Chassis & House batteries master shut off switches
- LED porch and patio lights
- Easy read 12v circuit house load center
- Solar panel controller with roof prep
- Automotive chassis fuse panel

Plumbing Standards

- Variable speed constant pressure water pump
- Individual zoned hot/cold manifold water supply system
- 4-way water management valve in water bay compartment
- Bath - Solid surface under mount sink
- Kitchen - Stainless steel under mount sink
- One piece fiberglass shower with tempered glass door and skylight
- Whole house water filter
- Black water tank flush system
- Kitchen-Single lever faucet with pull-out sprayer
- Double lever lavatory faucets
- Porcelain china bowl toilet with foot flush
- Tecma macerator toilet (rear bath) (N/A 34QS)
- Clean-easy exterior shower hose
- Convenience monitor panel at water bay
- 360 roof vent caps

Driver/Passenger Area Standards

- One piece windshield
- Power front day/night shades
- Manual passenger and driver window night shade
- Metallic cherry wood grain dash panels (N/A Milan)
- Fog lights
- 10" Dash radio with integrated color back-up and side view camera package with navigation
- Wrap around cockpit with 6 gauge instrument cluster
- Leatherette driver seat, swivel and recline with 6-way power adjustments
- Leatherette passenger seat, swivel, recline and manual footrest
- Driver and passenger side console with cupholders
- Lighted tiled step well
- Two (2) Defroster fans with high and low settings
- Driver/passenger cup holders
- Multiple USB charging ports
- Automotive dash AC/Heater with deluxe controls

Entertainment Standards

- 48" LED TV, living room (N/A 34QS, 39A)
- 40" LED TV, living room (N/A 38A)
- 32" LED TV, bedroom
- 32" LED TV, exterior
- 19" LED TV, (2) each bunk with easy access HDMI jack (N/A 34QS, 39A)
- Sound Bar with radio, integrated sub and Bluetooth
- Roof mount Winegard Trav'ler satellite prep
- Park/cable TV prep
- High Definition Cat6 matrix signal distribution
- High Definition digital TV antenna with signal strength indicator
- Blu-ray DVD player

Interior Standards

- Polished porcelain tile
- Hardwood cabinetry and slideout fascia
- Raised panel hardwood cabinet doors with glaze
- Hidden hinges and bar pull style cabinet hardware
- Carpeted slide-outs where applicable
- Window valances

- Bedroom carpet with padding
- Visionary hide-a-bed sofa
- Theater Seating with Recliners (Opt. 34QS, 38A)
- Polished solid surface kitchen/dinette countertops with flush sink and stove covers
- Décor laminate on all other countertops
- Soft close ball bearing drawer guides in kitchen
- Full extension ball bearing metal drawer guides
- Galley storage compartment for range and sink covers
- Pull out kitchen countertop (N/A 34QS)
- Bi-fold doors with bunk beds (N/A 34QS, 39A)
- "Soft Touch" Dream booth dinette with storage underneath
- Soft Touch padded ceiling
- Roller style day/night shades
- Dresser drawers and wardrobe type cabinets
- 72" X 80" king pillow top with bedspread and decorative pillows (N/A 38A)
- 60" X 80" queen pillow top with bedspread and decorative pillows (N/A 34QS, 39A)
- Hardwood headboard with padded insert
- Bedroom, overhead cabinets
- Bed night stands (one featuring dual USB jack)
- Mirrored medicine cabinets
- Towel bar, toilet paper holder and towel ring

Appliances Standards

- 15,000 BTU with heat pump (front), 15,000 A/C (rear) low profile A/C's
- Holding tank heat pads
- Truma continuous flow tankless gas hot water heater
- 35,000 BTU furnace (N/A 38A, 39A)
- 42,000 BTU furnace (N/A 34QS)
- 30" OTR convection microwave oven
- 2 Door residential refrigerator
- Sealed 3-burner stainless recessed cook top
- Power fan in bathroom with rain cover
- Maxxair in galley w/wireless remote control with rain cover
- Washer/dryer prep

Safety Standards

- 110 GFI protected circuits
- Carbon monoxide detector
- LP gas detector with auto tank shutoff
- Smoke alarm
- Egress window
- Surface mounted fire extinguisher

Interior Options

- Theater Seating w/twin recliners IPO of standard Visionary Sofa (N/A 38A, 39A)
- Porcelain wood plank tile
- Polished porcelain or wood plank (Opt.) tile in bedroom IPO carpet
- Fitted Cockpit floormat with "Berkshire" logo

Exterior Options

- Slide tray in basement compartment

Driver/Passenger Area Options

- 32" LED TV, front overhead (N/A 39A)

Appliance/Electronic Options

- Trav'ler (Winegard) satellite antenna- Direct TV (US)
- Trav'ler (Winegard) satellite antenna- Shaw (Canada)
- Electric fireplace
- Stackable washer/dryer



Berkshire

24/7 EMERGENCY ROADSIDE ASSISTANCE

For a worry-free ownership experience, Forest River includes one year of Coach-Net RV Technical & Roadside Assistance with each RV purchase. Whether new to the RV lifestyle or an experienced RV enthusiast, Forest River owners have 24/7 access to technical, operational and emergency road service coverage throughout the US & Canada. Coach-Net's fast, dependable service is just a phone call away.

Coach-Net®
RV Technical & Roadside Assistance



PRE-DELIVERY INSPECTION FACILITY

20,000 square feet of quality assurance. The bare essentials for a premium product. This state-of-the-art facility gives immediate daily feedback to production for quality assurance in every unit built.

CUSTOMER SATISFACTION



www.ForestRiverBuyLocal.com

LaMESA REC VAN

LaMesaRV.com
800-496-8778



Learn More
Scan this barcode using a QR Reader on your smart phone to learn more about Forest River.



A Berkshire Hathaway company.

Forest River Diesel Division
1800 W. Hively Ave.
Elkhart, IN 46517
(574) 522-3693
www.forestriverinc.com/diesel
www.forestriveraccessories.com

All information contained in this brochure is believed to be accurate at the time of publication. However, during the model year, it may be necessary to make revisions and Forest River, Inc., reserves the right to make all such changes without notice, including prices, colors, materials, equipment and specifications as well as the addition of new models and the discontinuance of models shown in this brochure. Therefore, please consult with your Forest River dealer and confirm the existence of any materials, design or specifications that are material to your purchase decision.

GVWR (Gross Vehicle Weight Rating) - is the maximum permissible weight of the unit when fully loaded. It includes all weights, inclusive of all fluids, occupants, cargo, optional equipment and accessories. For safety and product performance do NOT exceed the GVWR.

GCWR (Gross Combined Weight Rating) - Is the maximum permissible loaded weight of your motor home and any towed trailer or towed vehicle. Actual GCWR of this vehicle may be limited by the sum of the GVWR and the installed hitch receiver maximum capacity rating; see hitch rating label for detail.

GAWR (Gross Axle Weight Rating) - is the maximum permissible weight, including cargo, fluids, optional equipment and accessories that can be safely supported by each axle.

UVW (Unloaded Vehicle Weight)* - is the typical weight of the unit as manufactured at the factory. It includes all weight at the unit's axle(s), including full fuel, all fluids and LP Gas. The UVW does not include cargo, fresh potable water, additional optional equipment or dealer installed accessories.

*Estimated Average based on standard build optional equipment.

CCC (Cargo Carrying Capacity)** - is the amount of weight available for fresh potable water, cargo, passengers, additional optional equipment and accessories. CCC is equal to GVWR minus UVW. Available CCC should accommodate fresh potable water (8.3 lbs per gallon). Before filling the fresh water tank, empty the black and gray tanks to provide for more cargo capacity.

** Estimated average based on standard build optional equipment.

Each Forest River RV is weighed at the manufacturing facility prior to shipping. A label identifying the unloaded vehicle weight of the actual unit and the cargo carrying capacity is applied to every Forest River RV prior to leaving our facilities.

The load capacity of your unit is designated by weight, not by volume, so you cannot necessarily use all available space when loading your unit.

Actual towing capacity is dependent upon your particular loading and towing circumstances, which includes the GVWR, GAWR and GCWR as well as adequate trailer brakes. Please refer to the Operator's Manual of your vehicle for further towing information.

Berkshire



FREE MEMBERSHIP
to Forest River Owners' Group

www.forestriverfrog.com

©2017 Berkshire- a division of Forest River Inc.
A Berkshire Hathaway company



*Berkshire*_{XL}

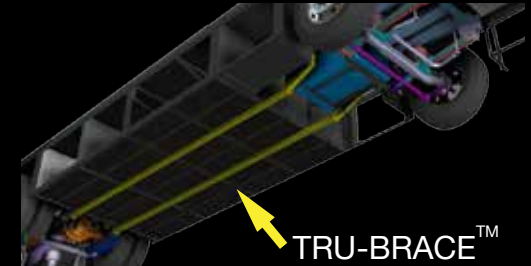


TRU-BRACE

Forest River Diesel Chassis Upfit Support System



Your home
on wheels needs
a solid foundation,
that is why your Forest
River Diesel Chassis
is upfit by MORryde.



Structure built on a fixture table for optimum leveling and squareness. Laser cutting +/- 0.010. Bending within +/- 0.01 degree.

ORIGINAL CHASSIS



UPFIT WITH THE TRU-BRACE™ REINFORCED FRAME



Aluminized Steel Side Skirts **prevent rust** and **prolong the life** of the structure

Side skirts assembled as one piece to **minimize seams** and **prevent rust creep**

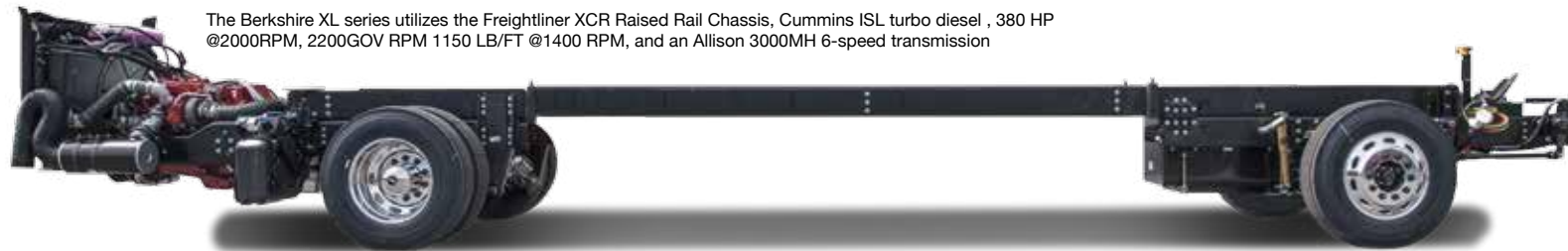
Upgraded from molded plastic, the steel bays hold **more weight** for your gear

The Tru-Brace™ reinforcements **strengthen the frame**, **reduce chassis flex** and **minimize the springboard effect** that whips the back of your unit up and down over rough roads.

DRIVE THE DIFFERENCE.

You expect more, we deliver more.

At Berkshire we know your standards are high, and we strive not to meet but to exceed your expectations. From the ground up, the Berkshire series is designed to bring you complete comfort on the road. In our effort to bring you unparalleled excellence, we proudly utilize only the finest components and building processes in the industry as a sign of our dedication to your satisfaction.



The Berkshire XL series utilizes the Freightliner XCR Raised Rail Chassis, Cummins ISL turbo diesel , 380 HP @2000RPM, 2200GOV RPM 1150 LB/FT @1400 RPM, and an Allison 3000MH 6-speed transmission



Introducing the V-Ride™ Rear RV Suspension System from FCCC. As the first ever single axle suspension rated at 21,000 pounds and higher, it's designed for today's demanding luxury motorhome owners- who want the ability to carry more gear, the freedom to equip their interiors with premium amenities, and a comfortable, confident driving experience.*

CONSTRUCTION BENEFITS



BERKSHIRE CONSTRUCTION BENEFITS:

1. For quality assurance, all construction takes place in a single facility.
2. Auxiliary air chuck on 1.5" insulated firewall.
3. Neoprene isolator between chassis and floor eliminates vibration.
4. Truma continuous hot water heater.
5. Easy interior dash access.
6. Auxiliary LP hook-up on curb side.
7. Minimal connections on all water lines.
8. Our fiberglass dash is integrated with the front cap.
9. All firewall openings sealed and grommets to eliminate electrical shorts

EXTERIOR FEATURES



EXTERIOR FEATURES:

1. All Berkshire XL's feature an exterior entertainment center with a 40" LED HDTV with radio and auxiliary jack.
2. The Berkshire XL's standard slide out 10.0kW generator.
3. Easily access chassis electrical fuses with our exclusive no fuss schematic.
4. Berkshire XL's water manifold system with whole unit water filter and exterior shower.
5. Standard strut assisted café compartment doors with pass thru storage and optional slide-out storage tray.
6. Equalizer Systems hydraulic extend and retract landing gear. Automatic, one touch operation levels your motorhome in less than two minutes, operating each leg independently in a sequential process.

*Berkshire*_{XL}

40B | FRONT TO BACK VIEW | COCKPIT | ICED COCOA SPARROW DECOR | NATIVE CHERRY WOOD GRAIN



Berkshire
XL

*Berkshire*_{XL}





*Berkshire*_{XL}





40B | KITCHEN | SIERRA MAPLE WOOD GRAIN



40B | MASTER SUITE | SIERRA MAPLE WOOD GRAIN



INDIGO EXTERIOR OPTION



40B | MASTER BATH | SIERRA MAPLE WOOD GRAIN

Berkshire_{XL}

PAINT PACKAGES | DECOR OPTIONS



INDIGO



RUBY TUNDRA



GRAPHITE



CARAMEL MOCHA

WOOD GRAIN OPTIONS



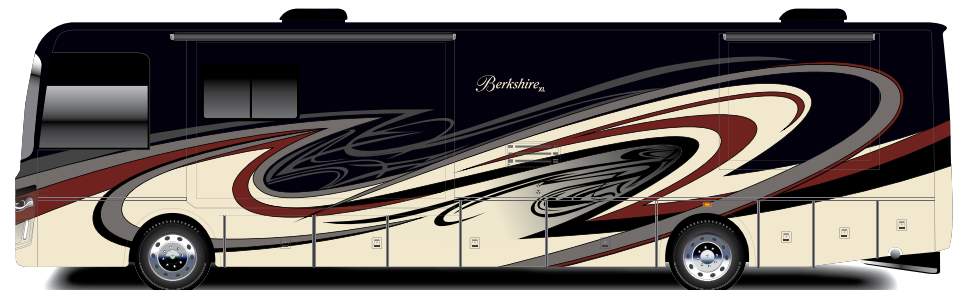
EXECUTIVE DARK CHERRY
(WHITE DIAMOND PEBBLE INTERIOR EXCLUSIVE)



SIERRA MAPLE

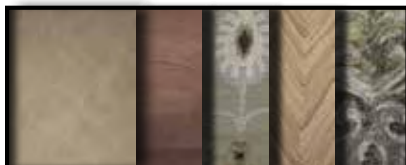


NATIVE CHERRY

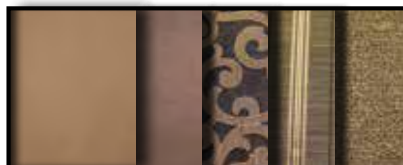


VINTAGE CLASSIC

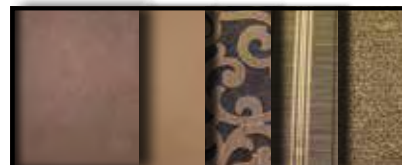
WHITE DIAMOND PEBBLE



ICED COCOA SPARROW



ICED COCOA CHESTNUT



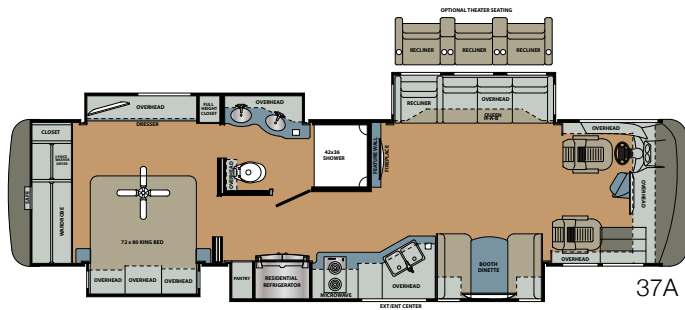
ANTIQUE BRONZE SPARROW



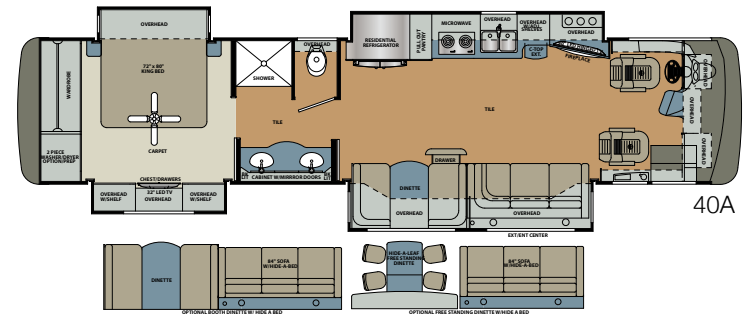
ANTIQUE BRONZE CHESTNUT



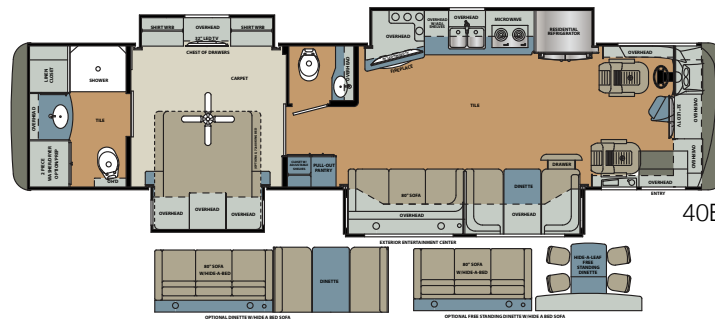
FLOORPLANS | SPECIFICATIONS



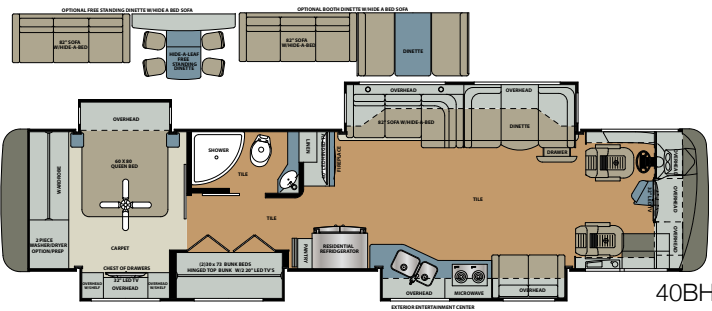
37A



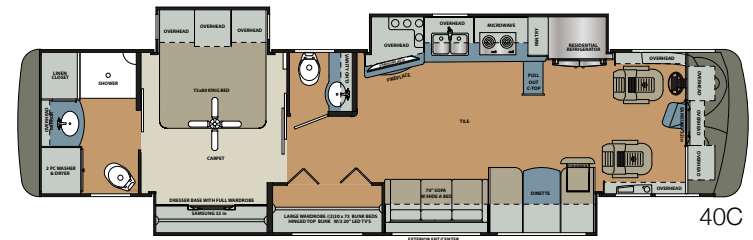
40A



40B



40BH



40C

Floorplan	Length* (Feet)	GVWR (Lbs.)	GCWR (Lbs.)	GAWR Front (Lbs.)	GAWR Rear (Lbs.)	Wheelbase (Inches)	Height* (Feet)	Width* (Inches)	Basement storage* (Cu. Ft.)	Awning (Feet)	Fresh Tank* (Gal.)	Gray Tank (Gal.)	Black Tank (Gal.)	LP Tank	Furnace (BTU's)	Hot Water
37A	38' 8"	TBD	TBD	TBD	TBD	238"	12' 5"	100"	185'	17' 3"	103	66	42	24.5	40,000	Continuous
40A	41' 0"	33,000	43,000	12,000	21,000	266"	12' 5"	100"	220'	13' 6"	103	66	42	24.5	40,000	Continuous
40B	41' 0"	33,000	43,000	12,000	21,000	266"	12' 5"	100"	220'	13' 0"	103	66	42	24.5	40,000	Continuous
40BH	41' 0"	33,000	43,000	12,000	21,000	266"	12' 5"	100"	220'	10' 5"	103	66	42	24.5	40,000	Continuous
40C	41' 0"	33,000	43,000	12,000	21,000	266"	12' 5"	100"	220'	18' 0"	103	66	42	24.5	40,000	Continuous

*Fresh water tank includes quick drain valve Please see back cover for more information regarding weights.

Automotive & Cockpit Standards

- Freightliner XCR raised rail chassis
- Cummins ISL turbo diesel , 380 HP @2000RPM, 2200GOV RPM 1150 LB/FT @1400 RPM
- Allison 3000MH 6-speed transmission
- 120V engine heater 1000W
- 22.5" polished aluminum wheels
- Michelin XZA2 275/80R22.5 14 ply radial tires
- Trailer hitch capacity, 10,000 LBS
- Allison electronic push button shifter
- 100 gallon, locking dual fill fuel tank
- Driver side Fill, 13 gallon DEF tank
- LCD engine message center
- Day time running lights
- 7-Pin tow power connector
- 18.7 CFM air compressor
- Farr Eco-air cleaner
- Air filter restriction indicator
- Fuel/water separator
- Brake line air dryer with heater
- Automatic, heated moisture ejectors
- Power steering
- Washer/heavy duty-wiper with intermittent function
- 160 amp alternator
- Two (2) Maintenance free 1900CCA batteries
- Full air ABS brakes with auto slack adjuster
- Variable exhaust brake
- Telescopic/tilt steering wheel
- Suspension Neway front and V- Ride rear
- Sachs custom tuned shock absorbers
- 55 degree wheel cut
- Auto air suspension deflation system
- Cross flow, rear mounted radiator
- Transmission oil cooler
- 5 year / 100,000 mile coolant (some maintenance required)
- V.I.P. Smart Wheel, 4-Spoke 18" premium burlwood steering wheel
- Electronic cruise control with high idle
- Multiple auxiliary charging ports at dash
- Power stepwell cover
- Entry assist handle

Construction & Exterior Standards

- Fiberglass front and rear caps
- Full body painted exterior (4x clear coat)
- Four (4) point fully auto hydraulic leveling system with auto air dump
- Steel basement construction
- Tru-Brace chassis support system
- Rust resistant aluminized steel chassis skirts
- Diamond shield front mask protective film
- 1 Piece fiberglass roof
- Top-mount remote exterior/heated/mirrors/with cameras
- Frameless dual pane, dark tint windows
- Automotive foam and Ziebart seal undercoating
- Carefree power door awning
- Carefree Latitude patio awning with LED lighting and wind sensor
- Carefree slide out topper with covers
- Full height strut assisted compartment doors with full pass through storage
- "One Key" system, ext-compartment, entry door and fuel fill doors
- Quiet integrated A/C intake/ducting roof system
- Crowned and layered vacuum bonded fiberglass roof
- Vacuum bonded 3" floor w/tubular aluminum frame
- Gel coated vacuum bonded aluminum tube with fiberglass and block foam insulation sidewalls
- 1 piece 1/2" Structure wood flooring
- Block foam polystyrene insulation
- 30" Entryway
- In wall channeled drains for A/Cs
- Tubular steel firewall with polystyrene insulation
- Lighted exterior assist handle
- Two piece rear ladder
- 84" interior ceiling height
- PTL steel entrance door with deadbolt
- Auxiliary air chuck (front firewall)
- Auxiliary LP supply, quick connect (passenger side)
- LED Marker Lights
- Full length mud flap with chrome Forest River name
- Slide tray in basement compartment

Electrical Standards

- 50A service with auto transfer switch & 30' power cord
- 8kW Onan diesel generator with manual slide tray
- Energy management system
- Electronic battery disconnect switch
- Remote generator start switch (on dash & in bedroom)
- Multi-Plex lighting with smart APP Controls
- Dimmer control lighting throughout
- LED ceiling light package
- Driver and passenger LED ceiling map lights
- Cosmetic bathroom lighting
- Decorative wall and dinette lighting where applicable
- Auxiliary engine start switch at dash
- Individual dimmable reading lights bed overhead
- 2000w pure sine inverter/converter
- Auto generator start control
- Four (4) Six volt deep cycle house batteries
- Two (2) Master electric convenience shut off switches
- LED porch and patio lights
- Easy read 12v circuit house load center
- Solar panel controller with roof prep
- Automotive chassis fuse panel
- Ceiling fan in bedroom with decorative ceiling treatment
- Accent lighted kitchen counter top edging

Plumbing Standards

- Variable speed constant pressure water pump
- Individual zoned hot/cold manifold water supply system
- 4-way water management valve in water bay compartment
- Bath - solid surface under mount sink
- Kitchen - Stainless steel under mount sink
- One piece fiberglass shower with glass door & skylight
- Whole house water filter
- Black water tank flush system
- Kitchen-Hi rise single lever faucet w/ pull-out sprayer
- Single lever lavatory faucets
- Porcelain china bowl toilet w/foot flush (N/A 37A)
- Tecma macerator toilet (rear bath) (N/A 40BH, 40A)
- Clean-easy exterior shower hose
- Monitor panel in water bay compartment
- 360 Siphon roof vent caps

Driver/Passenger Area Standards

- One piece windshield
- Power front day/night shades
- Manual passenger & driver windows day/night shade
- Black pearl burl dash panels
- Fog lights
- 10" Dash radio with integrated color back-up and side view camera package with navigation
- Wrap around cockpit with 6 gauge instrument cluster
- Flexsteel soft touch driver seat swivel, recline seat with 6-way power adjust
- Flexsteel soft touch passenger seat swivel, recline and power foot rest
- Passenger side console with cupholder & workstation
- Lighted, tiled step well
- Two (2) Defroster fans with high and low settings
- Driver/passenger cup holders
- Multiple USB charging ports
- Automotive dash AC/Heater with deluxe controls
- Premium Freightliner gauge package w/chrome bezels

Entertainment Standards

- 40" LED TV, living room
- 32" LED TV, bedroom
- 32" LED TV, front dash overhead (N/A 40A)
- 20" LED TV, (2) each bunk with easy access HDMI jack (N/A 37A, 40A, 40B)
- Hi-Fi sound bar with bluetooth
- Roof mount Winegard Trav'ler satellite prep
- Cable TV prep
- High Definition Cat6 matrix signal distribution
- High Definition digital TV antenna with signal strength indicator
- Blu-ray DVD player
- Ext/entertainment center in sidewall: 40" TV and radio with auxiliary jack

Interior Standards

- Polished porcelain tile with accent tile
- Hi gloss glazed hardwood cabinetry and raised panel doors (Hi-gloss with glaze N/A with Executive Dark Cherry option)
- Hidden hinges and pull style cabinet hardware

- Carpeted living room and dining slide-outs
- Window valances
- Bedroom carpet with padding
- Soft Touch booth & Villa Hide-A-Bed sofa w/recliner (37A Only)
- Villa "soft touch" love seat (N/A 37A, 40A, 40B, 40C)
- Villa dream booth dinette/sofa ensemble with Hide-A-Bed and storage (N/A 37A, 40C)
- Dream booth dinette with Hide-A-Bed sofa (N/A 37A, 40BH, 40A, 40B)
- Polished solid surface kitchen countertops and backsplash with tile inserts
- Polished solid surface bathroom countertops and backsplash with tile inserts
- Laminate on all other countertops
- Soft close ball bearing drawer guides in kitchen
- Full extension ball bearing metal drawer guides
- Galley storage compartment for sink covers
- Kitchen pantry (N/A 40BH)
- Bi-fold doors, bunk beds (N/A 37A, 40A, 40B)
- Soft Touch padded ceiling
- Roller style day/night shades
- Dresser drawers and wardrobe type cabinets
- 72"X 80" Serta king bed with bedspread and decorative pillows (N/A 40BH)
- 60"X 80" Serta queen bed with bedspread and decorative pillows (N/A 37A, 40A, optional 40B, 40C)
- Hardwood headboard with padded insert
- Contoured overhead cabinets in slide rooms
- Bed night stands (front stand with dual USB jack)
- Mirrored medicine cabinets
- Towel bar, toilet paper holder and towel ring
- Fitted cockpit floormat with "Berkshire" logo

Appliance Standards

- 15,000 BTU with heat pump (front), 15,000 BTU (rear) low profile A/C's
- Holding tank heat pads
- Truma continuous flow tankless gas hot water heater
- (2) Dual zoned 20,000 BTU furnaces
- 30" OTR convection microwave oven
- Residential 23 cu. ft. French door refrigerator with ice

maker

- Recessed electric glass induction cook top
- Power fan in bathroom with rain cover
- Maxxair in galley w/wireless Remote control w/cover
- Washer/dryer prep
- Electric fireplace
- Central vacuum system

Safety Standards

- 110 GFI protected circuits
- Carbon monoxide detector
- LP gas detector with auto tank shutoff
- Smoke alarm
- Egress window
- Surface mounted fire extinguisher

Interior Options

- Free standing dinette with 4 chairs & "Hide-A-Bed" sofa IPO ensemble (N/A 37A, 40C)
- Booth dinette with "Hide-A-Bed" sofa IPO ensemble (N/A 37A, 40C)
- Free standing dinette w/4 chairs & "Theater Seating" IPO ensemble (N/A 37A, 40C)
- Booth dinette with "Theater Seating" IPO ensemble (N/A 37A, 40C)
- Theater seating IPO "Hide-A-Bed" sofa (N/A 40A, 40B, 40BH)
- Polished porcelain or wood plank (opt.) tile in bedroom IPO carpet
- Electronic safe
- Ceramic wood plank tile

Appliance/Electronic Options

- Trav'ler (Winegard) satellite antenna Direct TV (US)-Shaw (Canada)
- Stackable washer/dryer
- 10,000kW generator with a 3rd 13,500 BTU A/C (N/A 37A)

Berkshire_{XL}

CUSTOMER SATISFACTION



www.Forest River Buy Local.com



PRE-DELIVERY INSPECTION FACILITY
20,000 square feet of quality assurance. The bare essentials for a premium product. This state-of-the-art facility gives immediate daily feedback to production for quality assurance in every unit built.



GVWR (Gross Vehicle Weight Rating) - is the maximum permissible weight of the unit when fully loaded. It includes all weights, inclusive of all fluids, occupants, cargo, optional equipment and accessories. For safety and product performance do NOT exceed the GVWR.

GCWR (Gross Combined Weight Rating) - Is the maximum permissible loaded weight of your motor home and any towed trailer or towed vehicle. Actual GCWR of this vehicle may be limited by the sum of the GVWR and the installed hitch receiver maximum capacity rating; see hitch rating label for detail.

GAWR (Gross Axle Weight Rating) - is the maximum permissible weight, including cargo, fluids, optional equipment and accessories that can be safely supported by each axle.

UVW (Unloaded Vehicle Weight)* - is the typical weight of the unit as manufactured at the factory. It includes all weight at the unit's axle(s), including full fuel, all fluids and LP Gas. The UVW does not include cargo, fresh potable water, additional optional equipment or dealer installed accessories.

*Estimated Average based on standard build optional equipment.

CCC (Cargo Carrying Capacity)** - is the amount of weight available for fresh potable water, cargo, passengers, additional optional equipment and accessories. CCC is equal to GVWR minus UVW. Available CCC should accommodate fresh potable water (8.3 lbs per gallon). Before filling the fresh water tank, empty the black and gray tanks to provide for more cargo capacity.

** Estimated average based on standard build optional equipment.

Each Forest River RV is weighed at the manufacturing facility prior to shipping. A label identifying the unloaded vehicle weight of the actual unit and the cargo carrying capacity is applied to every Forest River RV prior to leaving our facilities.

The load capacity of your unit is designated by weight, not by volume, so you cannot necessarily use all available space when loading your unit.

Actual towing capacity is dependent upon your particular loading and towing circumstances, which includes the GVWR, GAWR and GCWR as well as adequate trailer brakes. Please refer to the Operator's Manual of your vehicle for further towing information.

Berkshire_{XL}



Learn More
Scan this barcode using a QR Reader on your smart phone to learn more about Forest River.



A Berkshire Hathaway company.

Forest River Diesel Division
1800 W. Hively Ave.
Elkhart, IN 46517
(574) 522-3693
www.forestriverinc.com
www.forestriveraccessories.com

All information contained in this brochure is believed to be accurate at the time of publication. However, during the model year, it may be necessary to make revisions and Forest River, Inc., reserves the right to make all such changes without notice, including prices, colors, materials, equipment and specifications as well as the addition of new models and the discontinuance of models shown in this brochure. Therefore, please consult with your Forest River dealer and confirm the existence of any materials, design or specifications that are material to your purchase decision.



FREE MEMBERSHIP
to Forest River Owners' Group

www.forestriverfrog.com

©Berkshire - a division of Forest River Inc.
A Berkshire Hathaway company



*Berkshire*_{XLT}

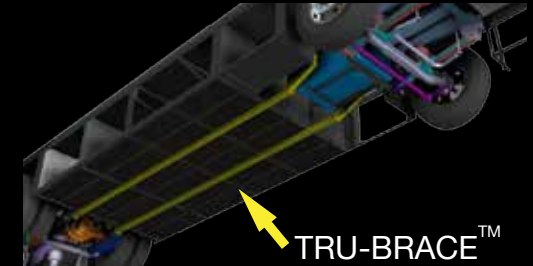


TRU-BRACE

Forest River Diesel Chassis Upfit Support System



Your home
on wheels needs
a solid foundation,
that is why your Forest
River Diesel Chassis
is upfit by MORryde.



Structure built on a fixture table for optimum leveling and squareness. Laser cutting +/- 0.010. Bending within +/- 0.01 degree.

ORIGINAL CHASSIS



Slight curve



Straightens and strengthens

UPFIT WITH THE TRU-BRACE™ REINFORCED FRAME



Aluminized Steel Side Skirts **prevent rust** and **prolong the life** of the structure

Side skirts assembled as one piece to **minimize seams** and **prevent rust creep**

Upgraded from molded plastic, the steel bays hold **more weight** for your gear

The Tru-Brace™ reinforcements **strengthen the frame**, **reduce chassis flex** and **minimize the springboard effect** that whips the back of your unit up and down over rough roads.

DRIVE THE DIFFERENCE.

You expect more, we deliver more.

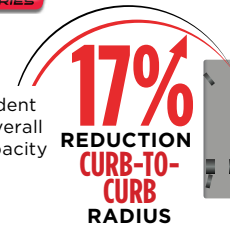
At Berkshire we know your standards are high, and we strive not to meet but to exceed your expectations. From the ground up, the Berkshire series is designed to bring you complete comfort on the road. In our effort to bring you unparalleled excellence, we proudly utilize only the finest components and building processes in the industry as a sign of our dedication to your satisfaction.



The XC-R chassis offers you greater horsepower and torque options. The design also features a lowered rear frame rail, allowing for a flat floor throughout the entire coach and more floorplan configurations.



The standard UltraSteer I-Series features an independent suspension on the tag axle. This provides enhanced overall ride quality and stability, with comparable weight capacity and turning angle to the B-Series.*



Introducing the V-Ride™ Rear RV Suspension System from FCCC. As the first ever single axle suspension rated at 21,000 pounds and higher, it's designed for today's demanding luxury motorhome owners—who want the ability to carry more gear, the freedom to equip their interiors with premium amenities, and a comfortable, confident driving experience.*

The Berkshire XLT series utilizes the Freightliner XCR Raised Rail Chassis, Cummins ISL 450HP @2100RPM, 2200GOV RPM, 250 LB/FT @ 1400RPM and an Allison 3000MH 6-speed transmission

CONSTRUCTION BENEFITS



BERKSHIRE CONSTRUCTION BENEFITS:

1. For quality assurance, all construction takes place in a single facility.
2. Auxiliary air chuck on 1.5" insulated firewall.
3. Neoprene isolator between chassis and floor eliminates vibration.
4. Truma continuous hot water heater.
5. Easy interior dash access.
6. Auxiliary LP hook-up on curb side.
7. Minimal connections on all water lines.
8. Our fiberglass dash is integrated with the front cap.
9. All firewall openings sealed and grommets to eliminate electrical shorts

EXTERIOR FEATURES



EXTERIOR FEATURES:

1. All Berkshire XLT's feature an exterior entertainment center with a 40" LED HDTV with radio and auxiliary jack.
2. The Berkshire XLT's standard slide out 10.0kW generator.
3. Easily access chassis electrical fuses with our exclusive no fuss schematic.
4. Berkshire XLT's water manifold system with whole unit water filter and exterior shower.
5. Standard strut assisted café compartment doors with pass thru storage and optional slide-out storage tray.
6. Equalizer Systems hydraulic extend and retract landing gear. Automatic, one touch operation levels your motorhome in less than two minutes, operating each leg independently in a sequential process.

Berkshire_{XLT}



*Berkshire*_{XLT}





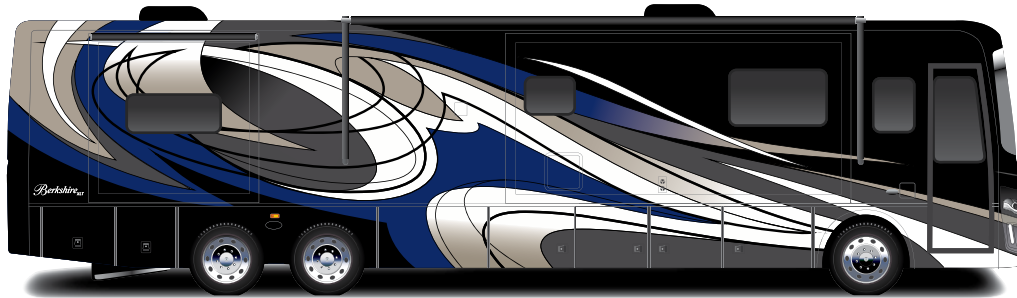


MALIBU EXTERIOR OPTION



Berkshire_{XLT}

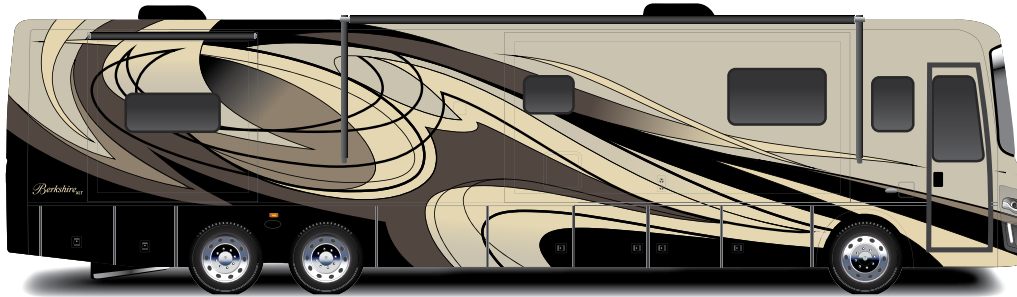
PAINT PACKAGES | WOOD GRAIN OPTIONS



MALIBU



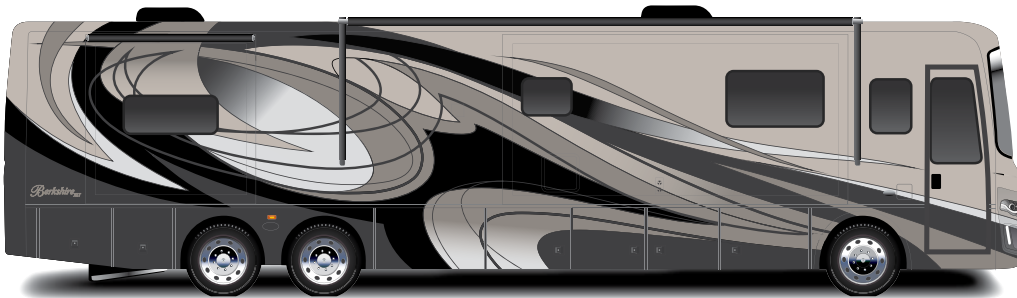
FOSSIL



PATAGONIA



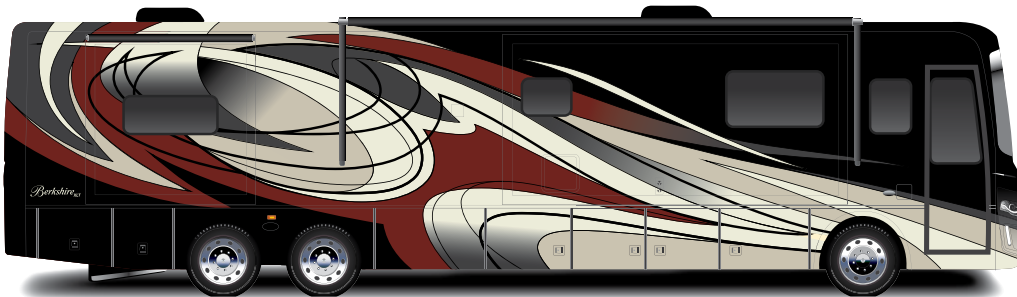
HEMATITE



CANTERBURY



TANZANITE



FLORENCE

WOOD GRAIN
OPTIONS



EXECUTIVE DARK CHERRY
(WHITE DIAMOND SHIELD INTERIOR EXCLUSIVE)

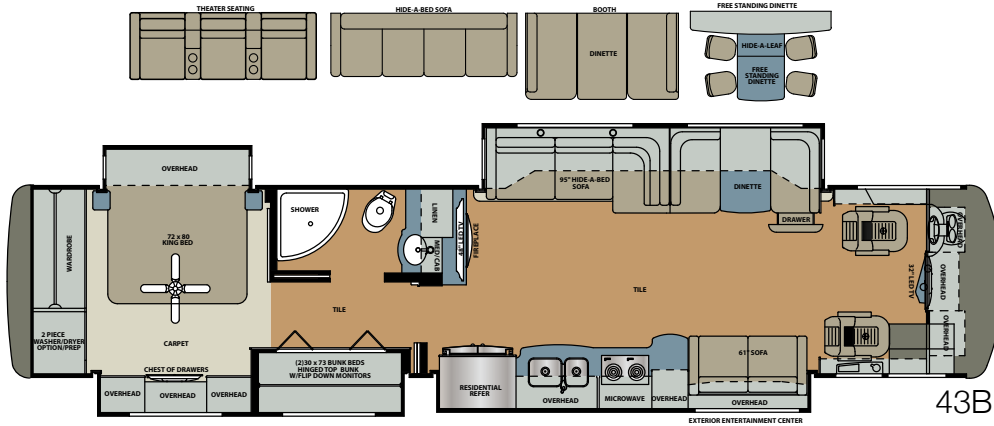


SIERRA MAPLE

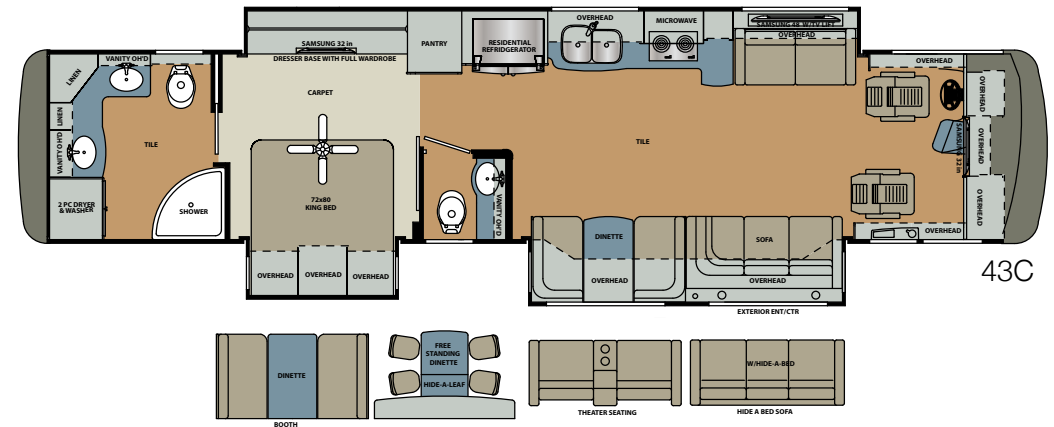


NATIVE CHERRY

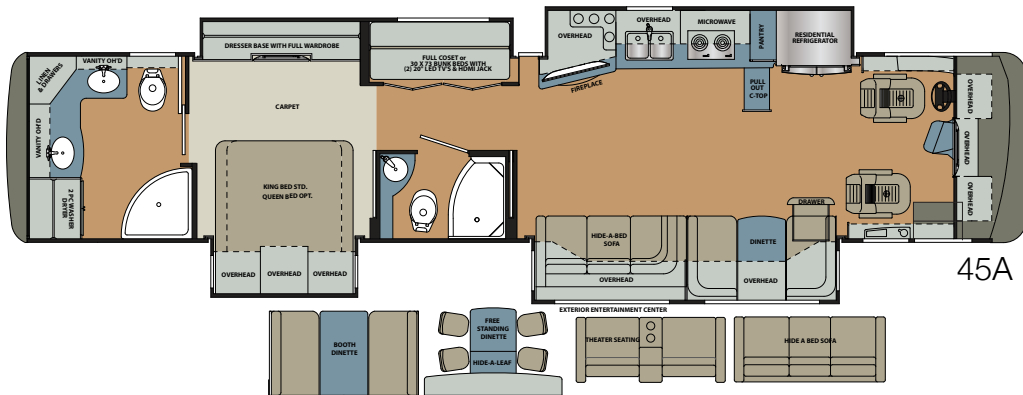
FLOORPLANS | DECOR OPTIONS | SPECIFICATIONS



43B



43C

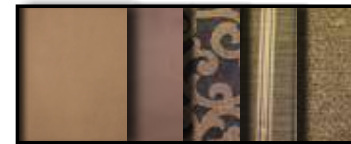


45A

WHITE DIAMOND SHIELD



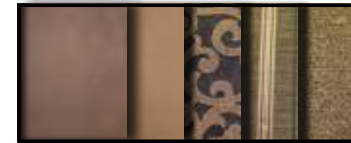
ANTIQUE BRONZE MOCCASIN



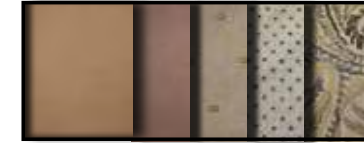
ICED COCOA BISON



ANTIQUE BRONZE BISON



ICED COCOA MOCCASIN



Floorplan	Length (Feet)	GVWR (Lbs.)	GCWR (Lbs.)	GAWR Front (Lbs.)	GAWR Rear (Lbs.)	GAWR TAG (Lbs.)	Wheel-base (Inches)	Height* (Feet)	Width* (Inches)	Basement storage* (Cu. Ft.)	Awning (Feet)	Opt. 2nd Awning (Feet)	Fresh Tank* (Gal.)	Gray Tank (Gal.)	Black Tank (Gal.)	LP Tank (Gal.)	Furnace (BTU's)	Hot Water
43B	42' 10"	44,320	59,320	14,320	20,000	10,000	273"	12' 11"	100"	227'	15' 8"	12' 9"	103	66	42	24.5	50,000	Continuous
43C	42' 10"	44,320	59,320	14,320	20,000	10,000	273"	12' 11"	100"	227'	12' 9"	N/A	103	66	42	24.5	50,000	Continuous
45A	44' 7"	44,320	59,320	14,320	20,000	10,000	294"	12' 11"	100"	261'	12' 9"	N/A	103	66	42	24.5	50,000	Continuous

*Fresh water tank includes quick drain valve

Please see back cover for more information regarding weights.

Automotive & Cockpit Standards

- Freightliner XCR raised rail chassis
- Cummins ISL 450HP @2100RPM, 2200GOV RPM, 1250 LB/FT @ 1400RPM
- Allison 3000MH 6-speed transmission
- 120V engine heater 1000W
- 22.5" polished aluminum wheels
- Michelin X Line Energy Z 275/80R 22.5
- Trailer hitch capacity, 15,000 LBS
- Allison electronic push button shifter
- 150 gallon, locking dual fill fuel tank
- 15 gallon DEF tank, remote fill-drivers side
- LCD engine message center
- Day time running lights
- 7-Pin tow power connector
- 18.7 CFM air compressor
- Farr Eco-air cleaner
- Air filter restriction indicator
- Fuel/water separator
- Brake line air dryer w/heater
- Automatic, heated moisture ejectors
- Power steering
- Washer/heavy duty-wiper w/ intermittent function
- 160 amp alternator
- Two (2) Maint. Free 1900CCA batteries
- Full air ABS brakes w/ auto slack adjuster
- Jacobs 2 stage compression brake
- Telescopic/tilt steering wheel & adjustable suspended pedals
- Suspension Neway (front) & V-ride (rear axle)
- Sachs custom tuned shock absorbers
- 55 degree wheel cut
- Auto air suspension deflation system
- Side radiator cooling package
- Transmission oil cooler
- 5 year / 100,000 mile coolant (some maintenance required)
- VIP Smart Wheel, 4 spoke 18" Burlwood steering wheel
- Electronic cruise control w/ high idle
- Multiple auxiliary charging ports at dash
- Power stepwell cover
- Entry assist handle
- Ultra steer tag axle

Construction & Exterior Standards

- Fiberglass front and rear caps
- Full body painted exterior (4x clear coat)
- Four (4) point fully auto hydraulic leveling system w/ auto air dump
- Steel basement construction
- Tru-Brace chassis support system
- Rust resistant aluminized steel chassis skirts
- Diamond shield front mask protective film
- 1 Piece fiberglass roof
- Top-mount remote exterior/heated/mirrors/with cameras
- Frameless dual pane, dark tint windows
- Automotive foam and Ziebart seal undercoating
- Carefree power door awning
- Carefree Latitude dual pitch patio awning w/LED lighting & wind sensor
- Carefree slideout toppers w/covers
- Full height strut assisted compartment doors w/full pass through storage
- "One Key" system, ext-compartment, entry door & fuel fill doors
- Quiet integrated A/C intake/ducting roof system
- Crowned and layered vacuum bonded fiberglass roof
- Vacuum bonded 3" floor w/Tubular aluminum frame
- Gel coated vacuum bonded aluminum tube w/ fiberglass & block foam insulation sidewalls
- 1 piece 1/2" structure wood flooring
- Block foam polystyrene insulation
- 30" Entryway
- In wall channeled drains for A/Cs
- Tubular steel firewall w/polystyrene insulation
- Lighted exterior assist handle
- Two piece rear ladder
- 84" interior ceiling height
- PTL steel entrance door with deadbolt
- Auxiliary air chuck (front firewall)
- Auxiliary LP supply, quick connect (passenger side)
- LED Marker Lights
- Full length mud flap w/ chrome Forest River name
- Slide tray in basement compartment

Electrical Standards

- 50A service w/auto transfer switch & 36' power cord
- 10kW Onan diesel generator w/ manual slide tray
- Energy management system
- Electronic battery disconnect switch
- Remote generator start switch (on dash & in bedroom)
- Multi-Plex Lighting w/smart APP Controls
- Dimmable control lighting throughout
- LED Ceiling light package
- Driver & passenger LED ceiling map lights
- Cosmetic bathroom lighting
- Decorative wall & dinette lighting w/applicable
- Auxiliary engine start switch at dash
- Individual reading lights bed overhead
- 2000w pure sine inverter/converter
- Auto generator start control
- Four (4) Six volt deep cycle house batteries
- Two (2) Master electric convenience shut off switches
- LED porch & patio lights
- Easy read 12v circuit house load center
- Solar panel controller w/roof prep
- Automotive chassis fuse panel
- Ceiling fan in bedroom w/decorative ceiling treatment
- Accent lighted kitchen counter top edging

Plumbing Standards

- Variable speed constant pressure water pump
- Individual zoned hot/cold manifold water supply system
- 4-way water management valve in water bay compartment
- Bath - solid surface under mount sink
- Kitchen - Stainless steel under mount sink
- One piece fiberglass shower w/ glass door & skylight
- Whole house water filter
- Black water tank flush system
- Kitchen-Hi rise single lever faucet w/ pull-out sprayer
- Single lever lavatory faucets
- Porcelain china bowl toilet w/foot flush
- Tecma-macerator toilet (rear bath) (N/A 43A, 43B)
- Clean-easy exterior shower hose
- Monitor panel in water bay compartment
- 360 Siphon roof vent caps

*Berkshire*_{XL}T

Driver/Passenger Area Standards

- One piece windshield
- Power front day/night shades
- Manual passenger & driver windows day/night shade
- Black pearl burl dash panels
- Fog lights
- 10" Dash radio w/ integrated color back-up and side view camera package w/navigation
- Wrap around cockpit with 6 gauge instrument cluster
- Flexsteel soft touch driver seat swivel, recline seat with 6-way power adjust
- Flexsteel soft touch passenger seat swivel, recline & power foot rest
- Passenger side console with cupholder & workstation
- Lighted step well
- Two (2) Defroster fans with high and low settings
- Driver/passenger cup holders
- Multiple USB charging ports
- Automotive dash AC/heater with deluxe controls
- Premium Freightliner gauge package w/chrome bezels

Entertainment Standards

- 48" LED TV, living room (N/A 45A)
- 40" LED TV, living room (N/A 43B, 43C)
- 32" LED TV, bedroom
- 32" LED TV, front dash overhead
- 19" LED TV, (2) each bunk w/ easy access HDMI jack (N/A 43C)
- Hi-Fi sound bar with bluetooth
- Roof mount Winegard Trav'ler satellite prep
- Cable TV prep
- High Definition Cat6 matrix signal distribution
- High Definition digital TV antenna with signal strength indicator
- Sirius/XM satellite radio capable
- Blu-ray DVD player
- Ext/entertainment center in sidewall: 40" TV & radio with auxiliary jack

Interior Standards

- Polished porcelain tile with accent tiles throughout
- Hi gloss glazed hardwood cabinetry and raised panel doors (Hi gloss with glaze N/A with executive dark cherry option)

- Hidden hinges and pull style cabinet hardware
- Carpeted living room and dining slide-outs
- Window valances
- Bedroom carpet w/ padding
- Villa "soft touch" love seat (N/A 45A)
- Villa dream booth dinette/sofa ensemble with hide-a-bed and storage
- Polished solid surface kitchen countertops and backsplash with tile inserts
- Polished solid surface bathroom countertops and backsplash with tile inserts
- Laminate on all other countertops
- Soft close ball bearing drawer guides in kitchen and bathroom
- Full extension ball bearing metal drawer guides
- Galley storage compartment for sink covers
- Kitchen pantry (N/A 43B)
- Bi-fold doors, bunk beds (N/A 43C)
- Soft Touch padded ceiling
- Roller style day/night shades
- Dresser drawers and wardrobe type cabinets
- 72"X 80" Serta king bed with bedspread and decorative pillows
- Hardwood headboard with padded insert
- Contoured overhead cabinets in slide rooms
- Bed night stands (front stand with dual USB jack)
- Mirrored medicine cabinets
- Towel bar, toilet paper holder and towel ring
- Living room ceiling feature
- Electronic safe
- Fitted cockpit floormat with "Berkshire" logo

Appliance Standards

- 15,000 BTU w/heat pump (front, rear) 13,500 BTU (middle) low profile A/C's
- Holding tank heat pads
- Truma continuous flow tankless gas hot water heater
- (1) 30,000 and (1) 20,000 BTU furnaces
- 30" OTR convection microwave oven
- Residential 23 cu. ft French door refrigerator with ice maker
- Electric induction glass cook top
- Power fan in bathroom with rain cover
- Maxxair in galley with wireless remote control and cover

- Washer/dryer prep
- Electric fireplace (N/A 43C)
- Central vacuum system

Safety Standards

- 110 GFI protected circuits
- Carbon monoxide detector
- LP gas detector with auto tank shutoff
- Smoke alarm
- Egress window
- Surface mounted fire extinguisher

Interior Options

- Free standing dinette w/4 chairs & "Hide-A-Bed" sofa IPO ensemble
- Free standing dinette w/4 chairs & "Theater Seating" IPO ensemble
- Booth dinette with "Hide-A-Bed" sofa IPO ensemble
- Free standing dinette w/4 chairs and expandable "Hide-A-Bed" sofa IPO ensemble (N/A 43B, 43C)
- Booth dinette with "Theater Seating" IPO ensemble
- Ceramic wood plank tile

Appliance/Electronic Options

- Electric power cord reel
- Stainless steel dishwasher
- Electric heated tile flooring
- Trav'ler (Winegard) satellite antenna Direct TV (US)- Shaw (Canada)
- Stackable washer/dryer
- Second patio awning (rear passenger slideout) (N/A 43C, 45A)



The Berkshire XLT series utilizes the Freightliner XCR Raised Rail Chassis, Cummins ISL 450HP @2100RPM, 2200GOV RPM, 1250 LB/FT @ 1400RPM and an Allison 3000MH 6-speed transmission

GVWR (Gross Vehicle Weight Rating) - is the maximum permissible weight of the unit when fully loaded. It includes all weights, inclusive of all fluids, occupants, cargo, optional equipment and accessories. For safety and product performance do NOT exceed the GVWR.

GCWR (Gross Combined Weight Rating) - Is the maximum permissible loaded weight of your motor home and any towed trailer or towed vehicle. Actual GCWR of this vehicle may be limited by the sum of the GVWR and the installed hitch receiver maximum capacity rating; see hitch rating label for detail.

GAWR (Gross Axle Weight Rating) - is the maximum permissible weight, including cargo, fluids, optional equipment and accessories that can be safely supported by each axle.

UVW (Unloaded Vehicle Weight)* - is the typical weight of the unit as manufactured at the factory. It includes all weight at the unit's axle(s), including full fuel, all fluids and LP Gas. The UVW does not include cargo, fresh potable water, additional optional equipment or dealer installed accessories.

*Estimated Average based on standard build optional equipment.

CCC (Cargo Carrying Capacity)** - is the amount of weight available for fresh potable water, cargo, passengers, additional optional equipment and accessories. CCC is equal to GVWR minus UVW. Available CCC should accommodate fresh potable water (8.3 lbs per gallon). Before filling the fresh water tank, empty the black and gray tanks to provide for more cargo capacity.

** Estimated average based on standard build optional equipment.

Each Forest River RV is weighed at the manufacturing facility prior to shipping. A label identifying the unloaded vehicle weight of the actual unit and the cargo carrying capacity is applied to every Forest River RV prior to leaving our facilities.

The load capacity of your unit is designated by weight, not by volume, so you cannot necessarily use all available space when loading your unit.

Actual towing capacity is dependent upon your particular loading and towing circumstances, which includes the GVWR, GAWR and GCWR as well as adequate trailer brakes. Please refer to the Operator's Manual of your vehicle for further towing information.



PRE-DELIVERY INSPECTION FACILITY
20,000 square feet of quality assurance. The bare essentials for a premium product. This state-of-the-art facility gives immediate daily feedback to production for quality assurance in every unit built.



www.ForestRiverBuyLocal.com



Learn More
Scan this barcode using a QR Reader on your smart phone to learn more about Forest River.



A Berkshire Hathaway company.

Forest River Diesel Division
1800 W. Hively Ave.
Elkhart, IN 46517
(574) 522-3693
www.forestriverinc.com/diesel
www.forestriveraccessories.com

All information contained in this brochure is believed to be accurate at the time of publication. However, during the model year, it may be necessary to make revisions and Forest River, Inc., reserves the right to make all such changes without notice, including prices, colors, materials, equipment and specifications as well as the addition of new models and the discontinuance of models shown in this brochure. Therefore, please consult with your Forest River dealer and confirm the existence of any materials, design or specifications that are material to your purchase decision.

Berkshire_{XLT}

FREE MEMBERSHIP
to Forest River Owners' Group

www.forestriverfrog.com

© 2017 Berkshire - a division of Forest River Inc.
A Berkshire Hathaway company

